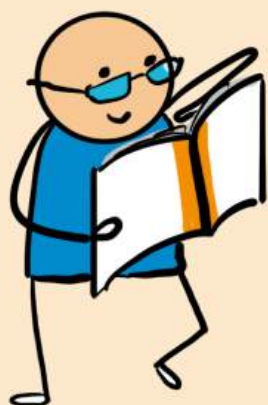


# Development of the Trauma Screener - Intellectual Disability (TS-ID): for adults with mild intellectual disability or borderline intellectual functioning (MID-BIF)

Anne Versluis, Carlo Schuengel, Liesbeth Mevissen, Ad de Jongh & Robert Didden



## BACKGROUND

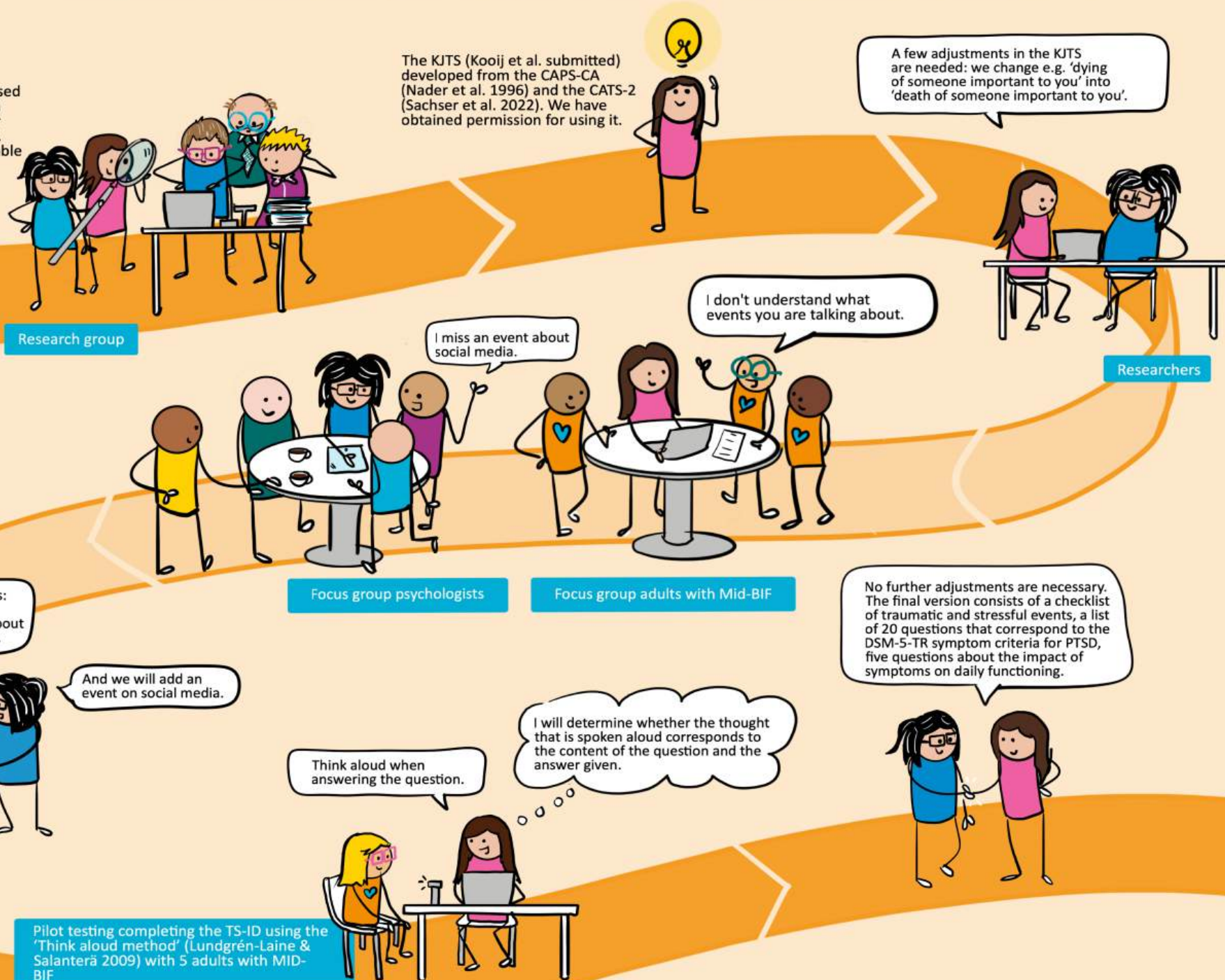
People with MID-BIF experience many traumatic experiences and may develop post-traumatic stress disorder (PTSD) more often than people without ID (for example, De Vogel & Didden 2022; Mevissen et al. 2016; Nieuwenhuis et al. 2019). Although PTSD is common among individuals with MID-BIF, it often remains unnoticed (Mevissen et al. 2020; Nieuwenhuis et al. 2019). If PTSD is recognized, effective trauma treatment is more likely to be provided. Screening may help to identify PTSD in individuals with MID-BIF at an early stage.

### AIM OF THIS STUDY:

to adapt and pilot test an existing trauma screener for adults with MID-BIF, according to the DSM-5-TR.

## METHOD

Which trauma screeners based on the DSM-5-TR have been developed and validated for individuals without MID-BIF. And which one is most suitable for people with MID-BIF?



## FINDINGS

The adaptation process from the KJTS into the TS-ID, with both expert input and feedback from the population, led to acceptance of face validity. The pilot test confirmed that questions and instructions were understood by adults with MID-BIF as intended.

## CONCLUSION

In conclusion, the TS-ID is a promising potentially valuable screening instrument for identifying PTSD in adults with MID-BIF.

Versluis, A., Schuengel, C., Mevissen, L., de Jongh, A., Schuengel, C., & Didden, R. (2024). Development and evaluation of the Trauma Screener - Intellectual Disability (TS-ID): A PTSD screening tool for adults with mild intellectual disability or borderline intellectual functioning.



SCAN ME!

Radboud Universiteit



viveon



's Heeren Loo